

How to Choose a Database Management System:

A Primer

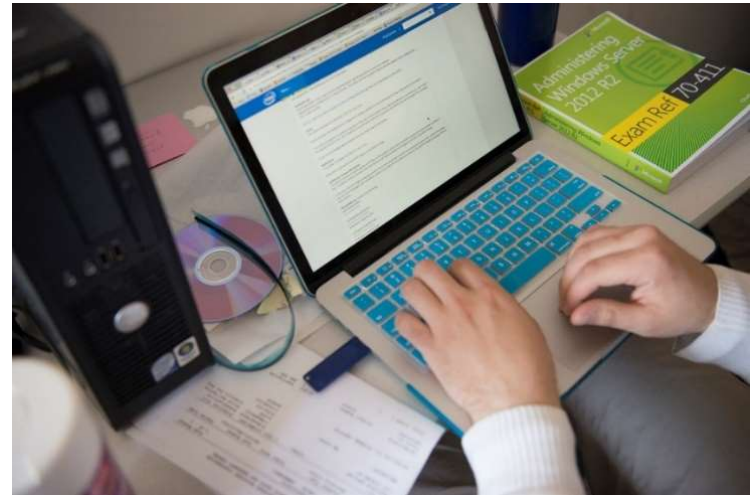
Russell Greenwald, Vice President

Insource Services, Inc.
January 30, 2020



Agenda

- Who We Are
- Assessment
- Feature Requirements
- RFP Process
- Implementation
- Questions



About Us: Insource Services, Inc.



*At Insource, we believe that HR, Finance & IT
start with people*

About Us: Insource Services, Inc.

What We Do:

- Full department outsourcing - generally part-time and long-term
- “A la carte” services
- Assessments
- Trainings
- Project/interim assignments

How We Do It:

- Seek to understand client businesses and mission
- Experienced, expert senior account leaders
- Account team with multiple skill levels; work is performed at the most cost-effective level
- Approximately 75 employees

Database Management Systems – Question 1

Who here has a database?



© Can Stock Photo

Assessment

Plan Elements

- Ownership
- Process
- Needs
- Governance
- Compliance and policy

What to Document

- Current state
- Desired state
- Gap analysis
- Next steps



Assessment Kickoff Meeting

- Why now?
- What would success look like?
- What is the guiding purpose?



Assessment – Ownership

- Responsibility
- Gatekeeper/Quality control
- Mission focused
- Liaison with consultants



© Can Stock Photo

Assessment – Liaison Role

- At all meetings
- Internal coordination
- Trained up to be DB admins
 - Reduce consulting dollars



- 5 why's
- Who/how is data collected
- Who/how is data reported
- Documented data flows



Assessment – Needs

- Data requirements
- Reporting requirements
- System and IT Integration requirements
- Feature requirements
- Employee adoption and training requirements



Database Management Systems – Question 2

How confident are you in the quality of your data?



- Does everything need to be imported?
 - Is there a predetermined cutoff point?
- Clean up the data before import
 - Who will do the cleanup? How much time is involved?
- Good data in = Good data out!

Assessment – Governance

- Naming
- Required fields
- Data entry
- Access
- Policy and controls

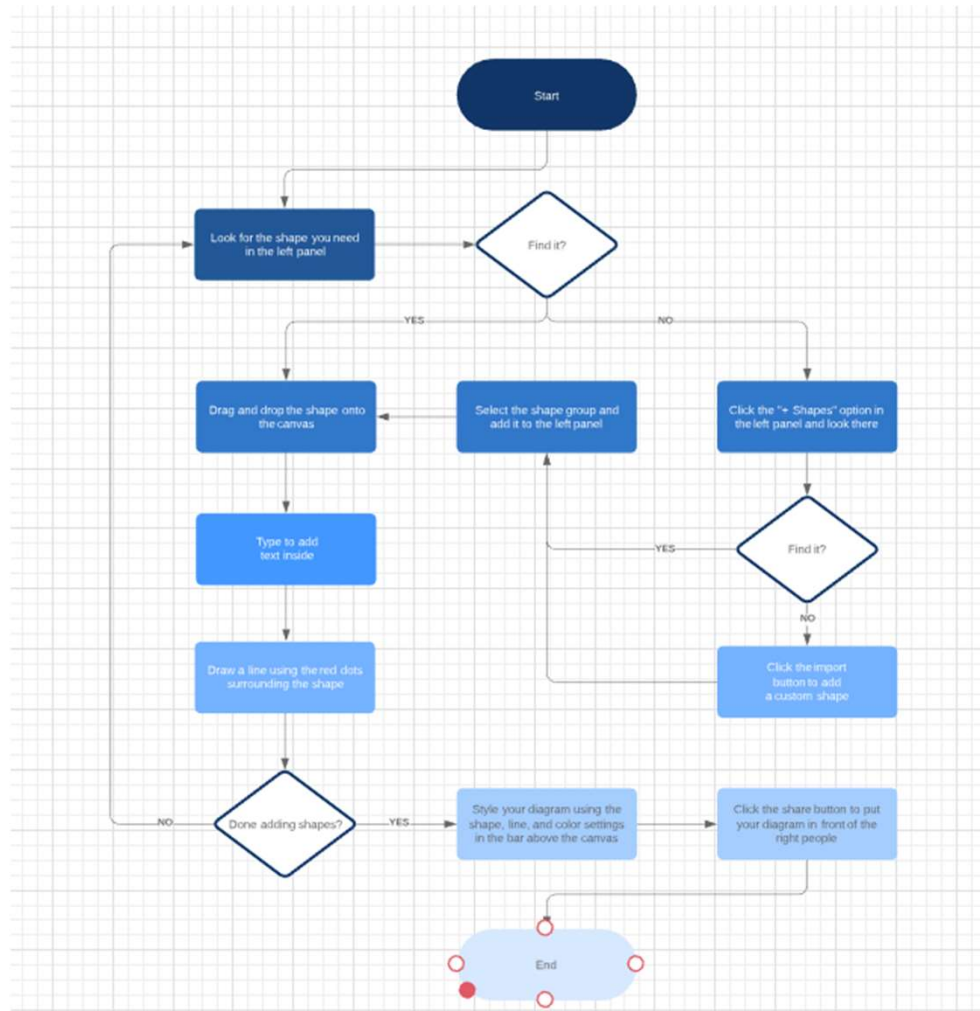


Assessment – Compliance and Policy

- Regulatory
- Organizational risk
- Needs vs convenience
- Ownership

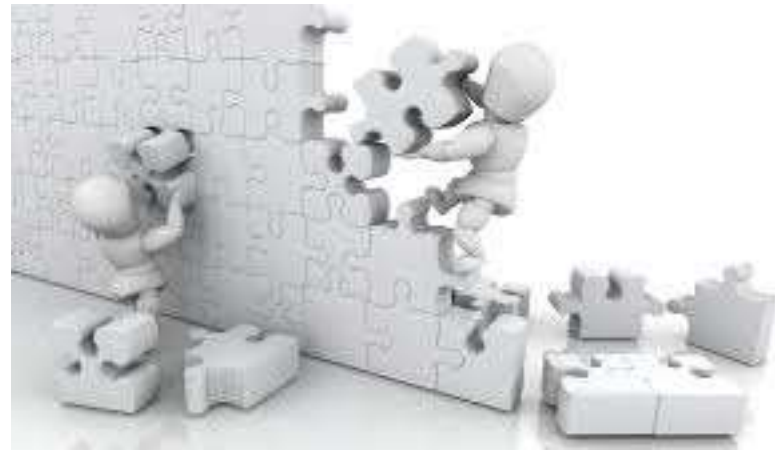


Assessment- Results



Implementation

- Road Map
- Data integrity
- Governance



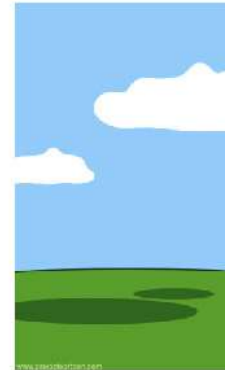
Implementation – Road Map



What the customer really needed



How the customer explained it



How the project was documented



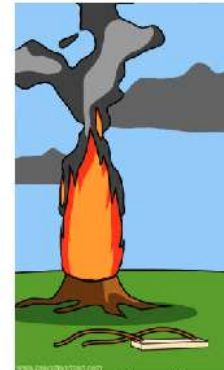
How the programmer wrote it



When it was delivered



How the customer was billed



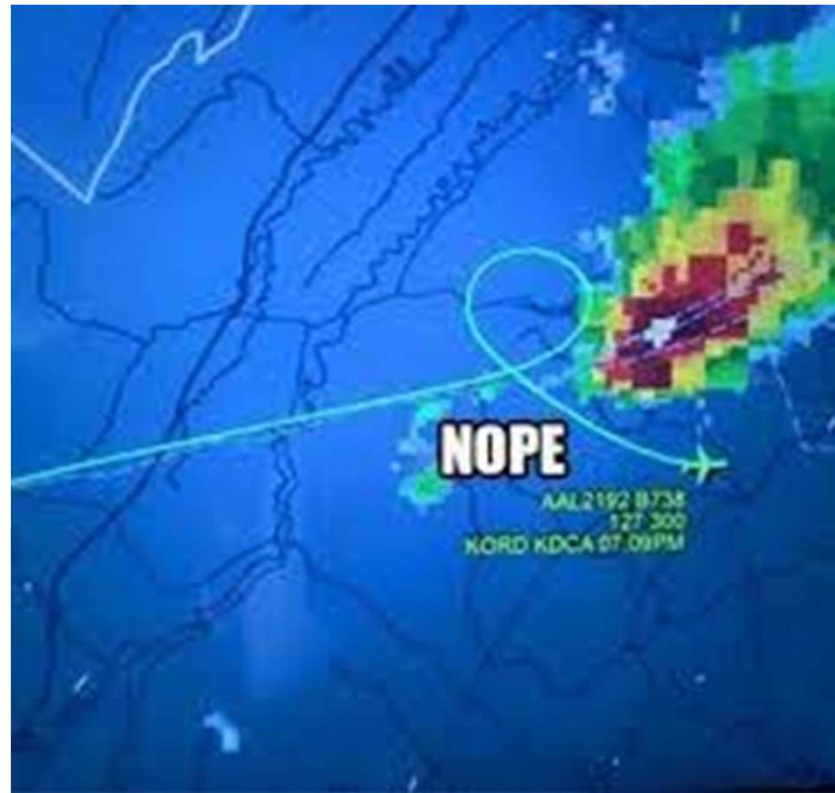
What the digg effect can do to your site



The disaster recover plan

Implementation – Course correction

- Internal Project Management
- Consistent and frequent check-ins internally. Standing weekly meeting/call with vendor
- Requirements, build, test, train, test deploy, test, train



Implementation – Governance

- Regular training
- Executive Sponsorship
- Annual review



Training

- Power Users
- Staff
- Executives
- Onboarding
- Documentation



Case Study - Overview

- Community Development Nonprofit
- 40 FTE's
- Multiple Programs
- Access Database for programs
- Excel and Google Sheets



Case Study - Solution

- Salesforce for Fundraising
- Salesforce for Training Program
- Dedicated admin with senior oversight
- Google Sheets
- Box.com



© Can Stock Photo

Summary

- Identify internal ownership
- Assess current environment
- Educate your organization
- Define updated processes
- Define Feature requirements
- Choose a vendor
- Take responsibility for implementation



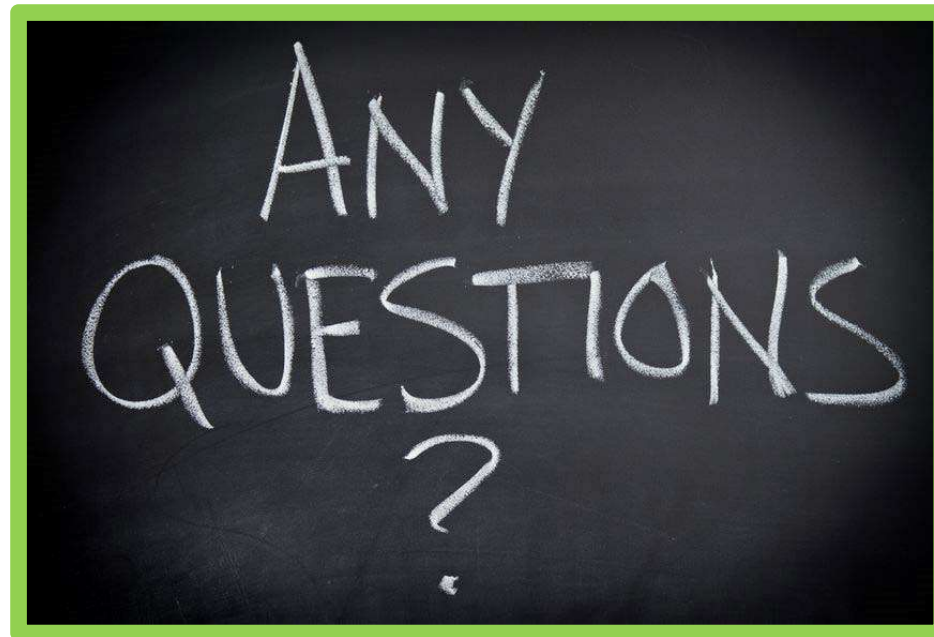
Summary

EST. 2019

THE GRIND EFFECT

SUCCESS IS A JOURNEY

Questions & Answers



Contact Information

Russell Greenwald, Vice President
rgreenwald@insourceservices.com

781-374-5116

www.insourceservices.com